

# ***EXACT***

Precast



# Game-changing Concrete Technology

Increase revenue, decrease costs and improve quality by harnessing the power of real-time, online data.







## Sustainability

Environmental sustainability is core to EXACT's ethos. From providing solutions that empower our clients to produce concrete products and structures more sustainably, to observing environmentally-conscious internal practices, we strive to effect significant positive change daily.



**Advance your business with  
EXACT's cloud-based precast  
technology solutions:**

### ***EXACT MONITOR***

Keep products within spec and eliminate rejections with reliable, real-time concrete monitoring. Page 8

### ***EXACT MATCH***

Accelerate production and optimize cylinder breaks with wireless match curing. Page 13

### ***EXACT CURE***

Reliably and efficiently increase daily output with electric, live steam and closed loop curing control. Page 14

### ***EXACT TRACK***

Connect management, production and quality control via our integrated digital tools. Page 18

# EXACT MONITOR

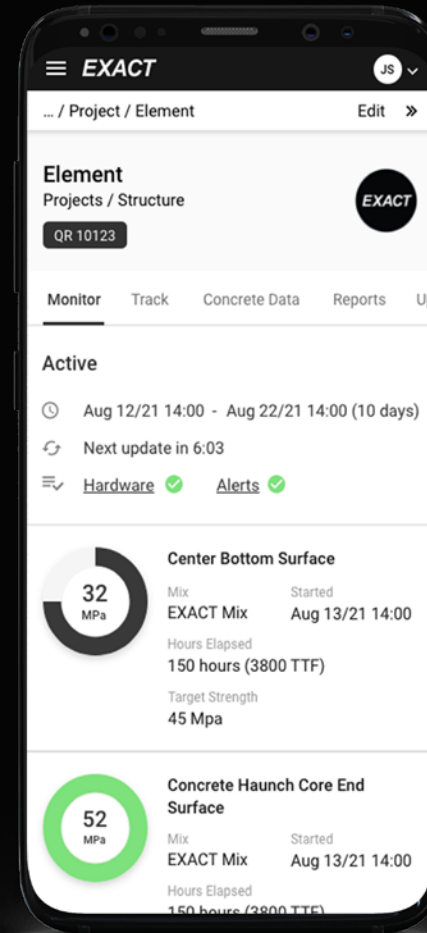


## Temperature + Humidity

Produce to spec and eliminate product rejections by monitoring your critical data in real-time. Maximum temperatures, temperature differentials and more are available at a glance so that they are never exceeded.

## Maturity

Strip sooner and turn over molds faster by accurately predicting your concrete strengths with EXACT's maturity module.



## Alerts via email and text message

EXACT's system is constantly monitoring your critical parameters and automatically alerts you before there's a problem. Take action and fix issues before they turn into expensive problems.

## iPhone, Android, Windows and Mac

We support your current IT infrastructure so that you can start benefiting from our system today, without any expensive IT investments or complicated integrations.





## Built for Precast

EXACT builds the most robust data loggers, beyond IP-69K with the highest quality components and obsessive quality control procedures.



## Plug-And-Play Probes

EXACT's temperature probes are pre-made, pre-tested and lab calibrated to within  $\pm 0.5^{\circ}\text{C}$  /  $\pm 1.0^{\circ}\text{F}$ . No assembly required. Touching rebar does not affect them.

## Data Intelligence

Gathering data is only the first step. EXACT's analytical and reporting tools turn your data into actionable decisions.

## Wireless that Works

We build our own radios to transmit further, using less power than anything else on the market. We transmit through concrete, and across hundreds of acres.



# EXACTMATCH

## Match Curing 2.0

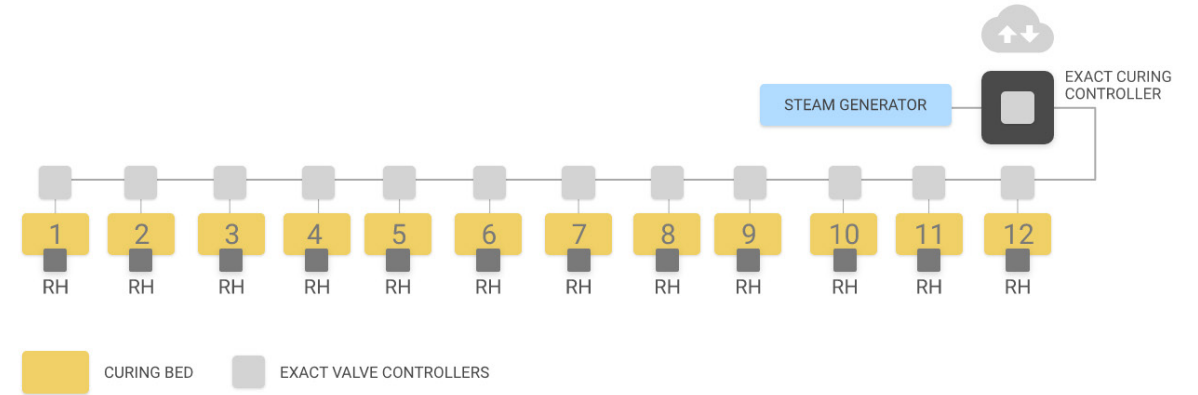
Place your test cylinders in our EXACT Match chambers and they'll be heated and cooled to the same temperature as your concrete products. EXACT Match works on our online cloud platform, so everything is done wirelessly and in real-time. With EXACT Match you get accurate breaks and strip sooner or you can keep to your current schedule while reducing cement and admixtures.





# EXACT CURE

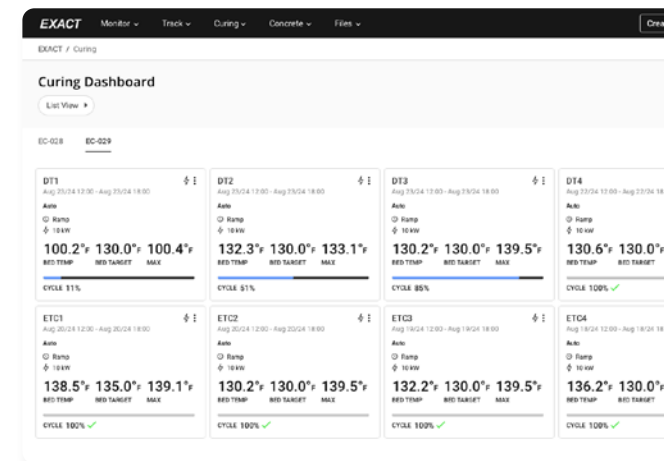
Accelerate precast production with EXACT's online curing control system. Set up and monitor your daily curing cycles from any computer or mobile device.



## Curing Control

Our system is compatible with most steam/vapor generators, actuated valves and electric heating system. Our wireless temperature loggers communicate with our curing controller to carefully control the application of heat and follow your predefined curves, keeping concrete temperatures within specifications.

Email and text message automatically notify you of any equipment issues, so that you can take corrective actions and keep production on schedule.





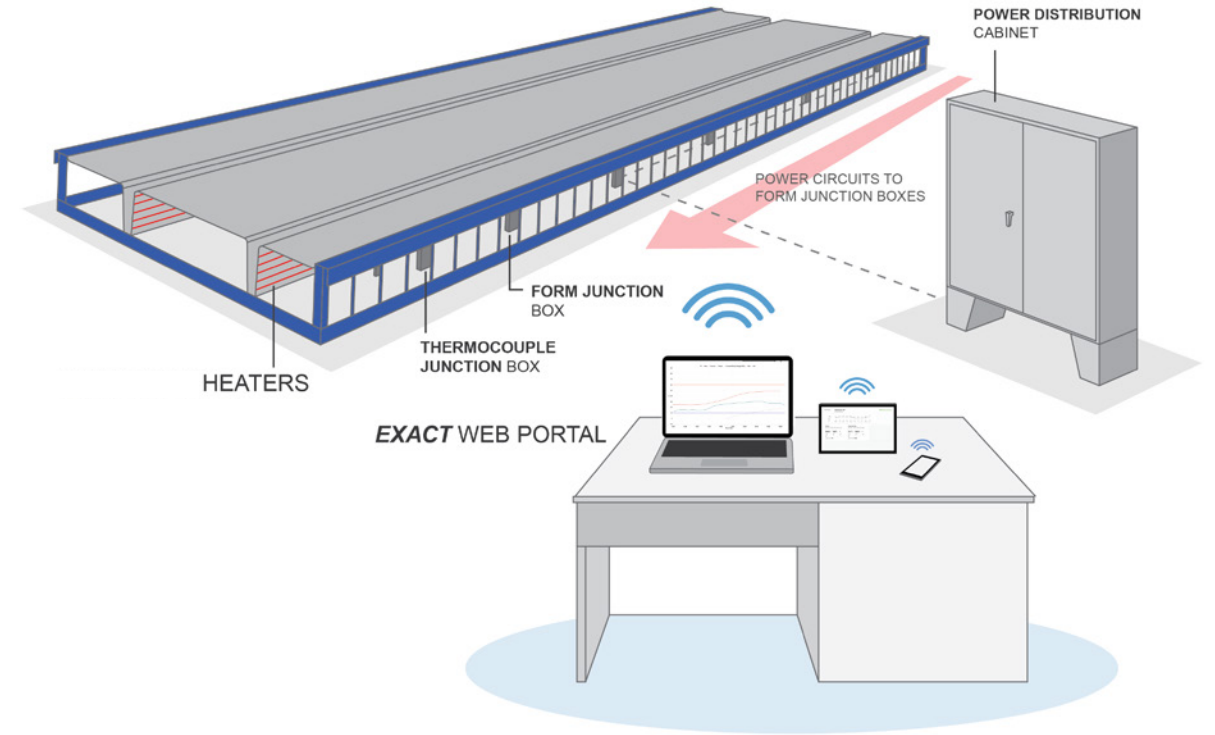
# Electric Curing

## Highest Quality Cure

Control the temperature of your concrete uniformly throughout the bed.

## Excellent Reliability

Checking the system takes a few seconds at startup. Failure during a cure is almost unheard of.

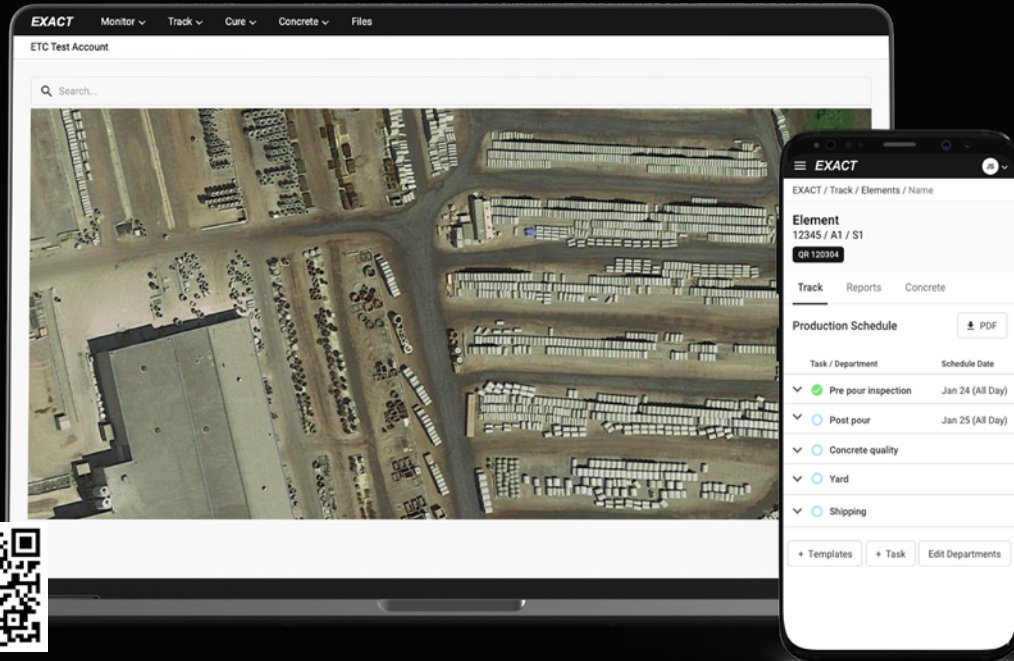


## Lowest Maintenance

Compared to steam/hydraulic systems, electric curing is virtually maintenance-free. No water softening, filters, burners, pipes, pumps or pressure vessels to maintain. Simply do a visual check on the breakers and contactors annually.

## Lowest Operating Costs

Over 90% of the system's heat goes into the product. Heat generated by the mix is captured, too.



# EXACTTRACK

Digital production and quality tracking solution designed to adapt to your workflow to produce the highest quality products, simplify reporting and give management a real-time overview on key performance indicators.

- QR Code Labels + GPS Location
- Real-time Inventory + Shipping
- Production Scheduling + Tracking
- Digital Dimensional Checks
- Custom Reporting
- Customizable Quality Inspection Task Lists
- Concrete Property Tracking

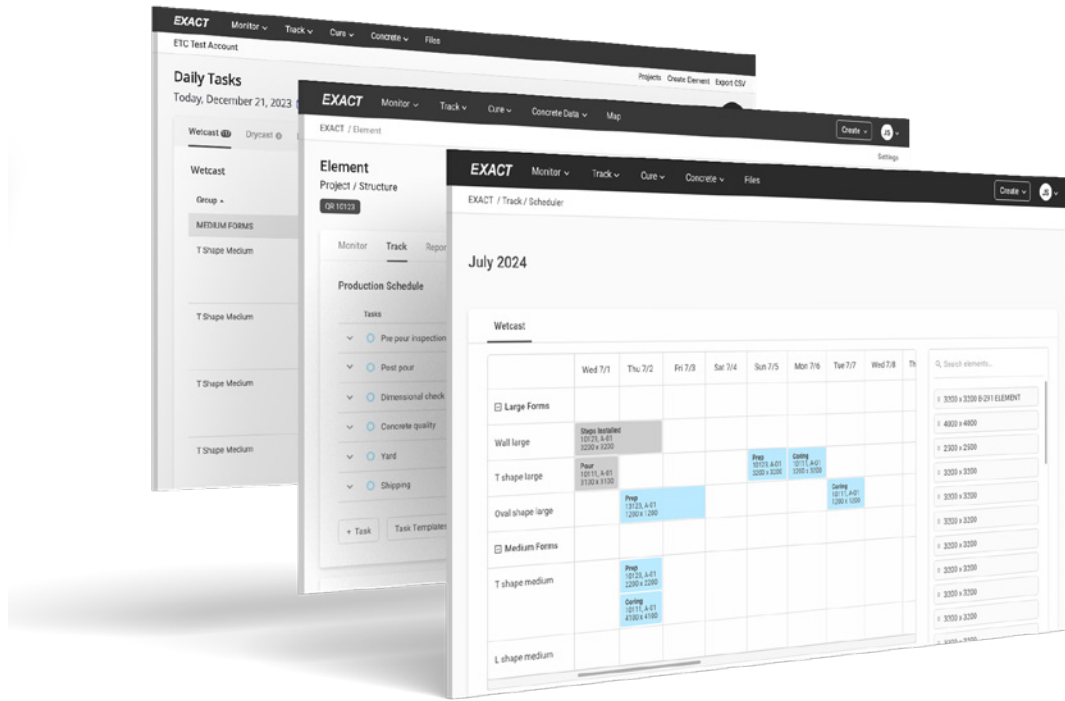


## QR Code, RFID Labels and GPS Location

Locate your products in seconds by searching a map of your yard with real-time GPS coordinates. EXACT's heavy-duty labels stick to concrete for years.

## Real-time Inventory

Get up-to-the-second inventories and know exactly where products are in the yard. Use your existing smartphones to scan the QR codes from over 20 feet away. Inventory counts now take hours instead of days, saving labor hours and increasing productivity.

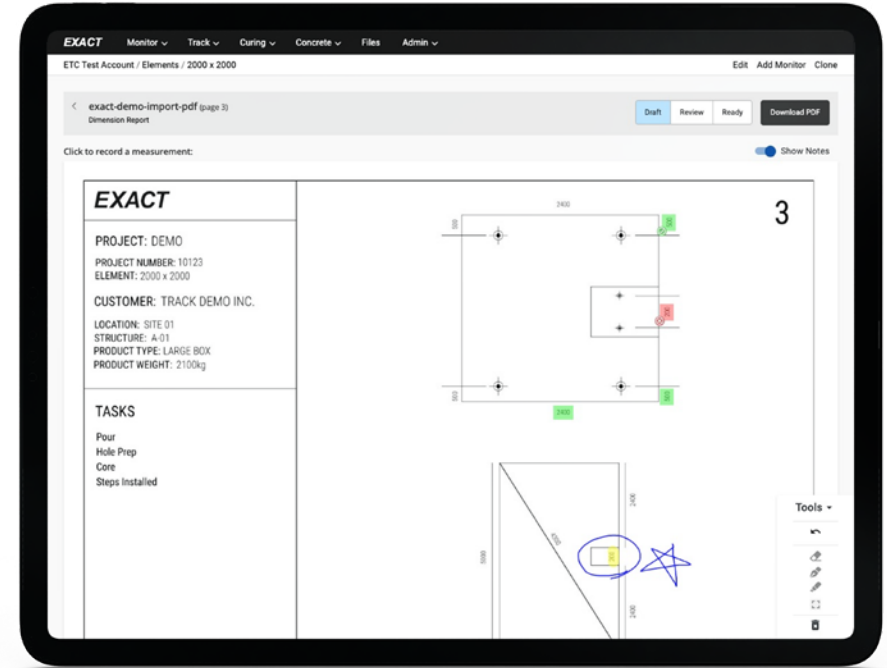


## Production Scheduling

Drag-and-drop production drawings into EXACT Track to automatically pull project data and critical details into the system. Schedule your production according to formwork availability and schedule tasks based on department capacities. Production data is always up-to-date and available anytime to your entire team via our online portal.

## Daily Tasks View

View the list of all scheduled products for the day in one place and start producing more quickly. Daily tasks view is up-to-date realtime, and can be downloaded in PDF.



## Digital Dimensional Checks

Pre-pour and post-pour dimensional checks are faster and more accurate with EXACT Track, reducing rework and delays. Using our tablet friendly online tool, easily find any production drawing, click on the dimension values, enter the measured values, and EXACT Track will confirm they're within tolerance of your specifications. Include dimensional check data in QC reports at the touch of a button.

## Product Tasks

Assign and schedule tasks to products and keep a clear and organized timeline of production. Tasks collect and validate data using pre-configured settings that match project requirements. Keep a thorough record of the production that is accessible anytime.

**And more to come!**



# 24/7 Support

Construction doesn't sleep and neither do we.

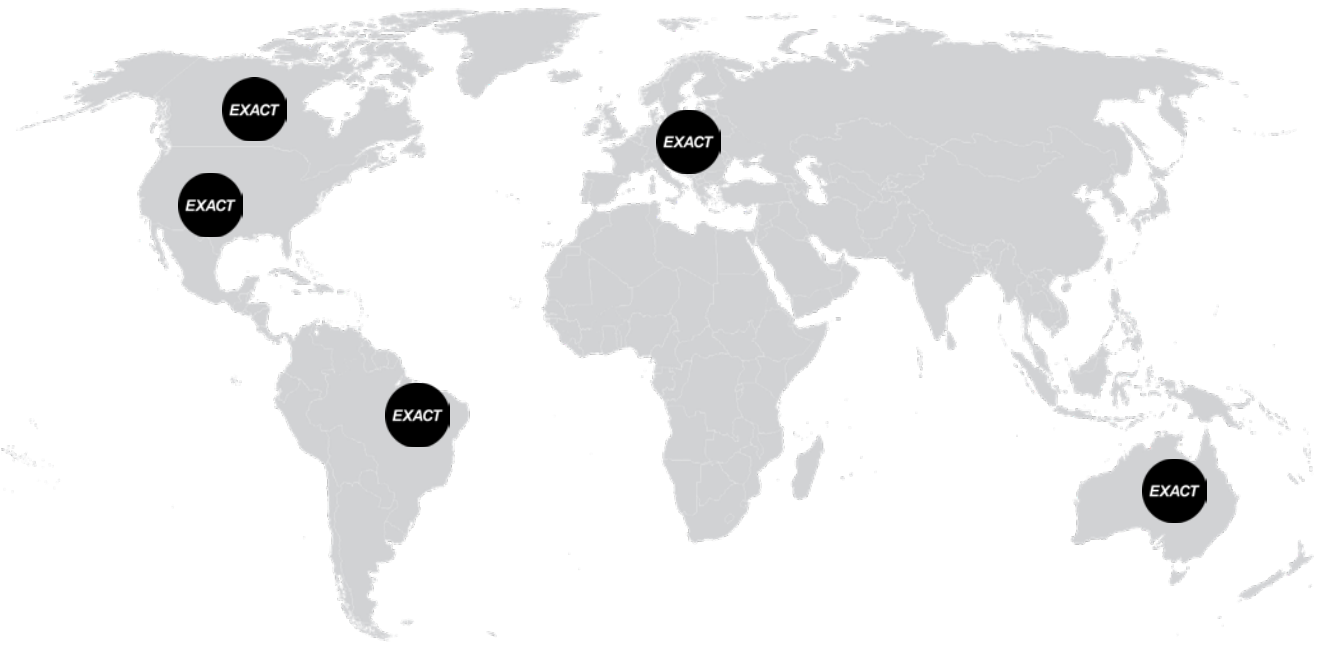
EXACT's software and hardware engineers are available to assist whenever required.

We are aligned with your success and are committed to providing fanatical customer service to ensure our solutions exceed your expectations.



# Technology Partner

EXACT is your precast technology partner. We're focused on building game-changing technology for you. We spend a lot of time at precast plants listening, testing and implementing new solutions to advance critical aspects of your business.



**Our mission is to build a brighter future where concrete construction is more efficient, sustainable and safe.**

We're passionate about construction and technology. Our careers were built in those fields. We've come together to push the precast industry forward. We're building tools to help you build a better a future.

Call us to discover how our solutions can advance your precast business.



**Jordan Korenzvit**  
CEO, Co-Founder

+1-416-876-8590  
jordan@exacttechnology.com



**Stacia Van Zetten P.Eng.**  
CSO, Co-Founder

+1-416-505-9134  
stacia@exacttechnology.com

**EXACT**  
exacttechnology.com

EXACT Technology  
950 Dupont Street, Unit 1B  
Toronto, Ontario M6H 1Z2

Canada +1-647-812-0248  
USA +1-302-485-0810